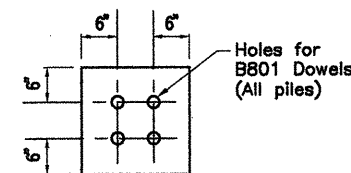
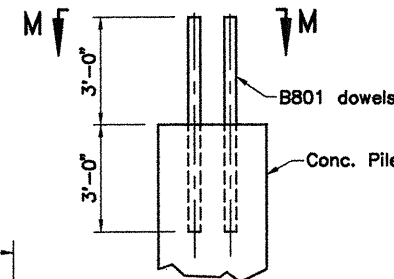
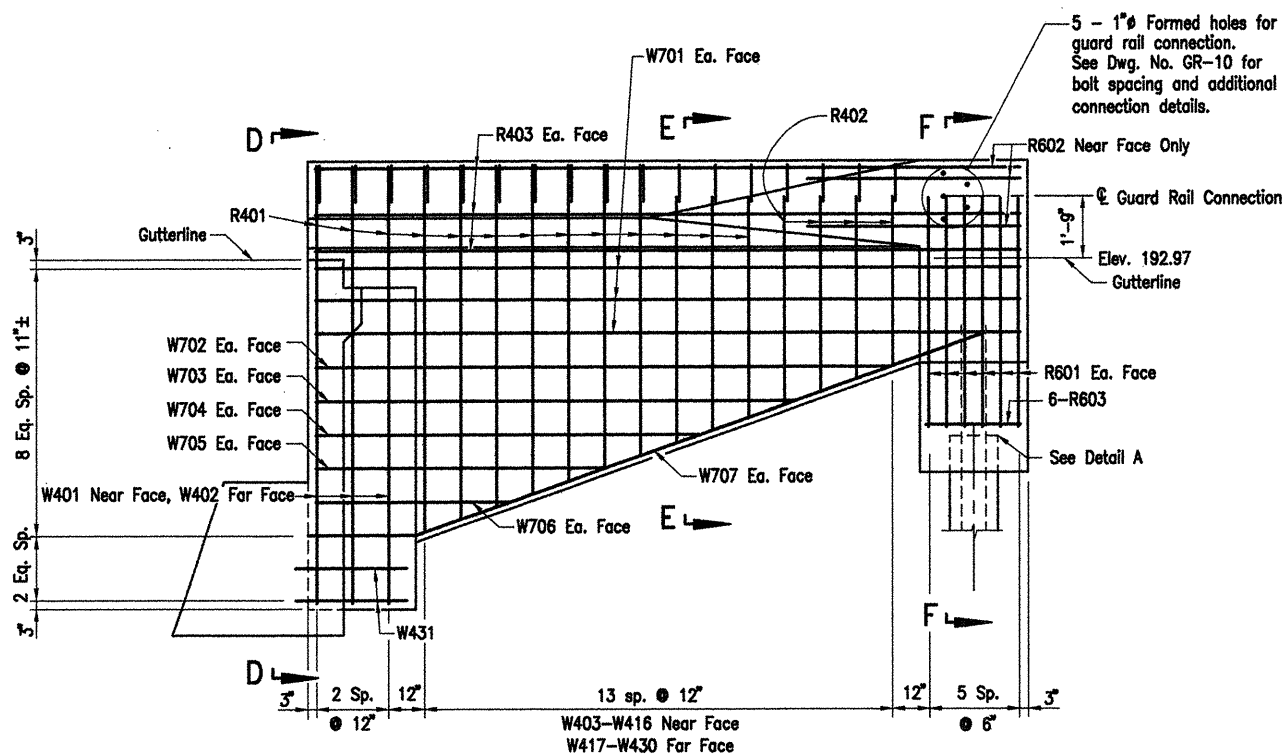
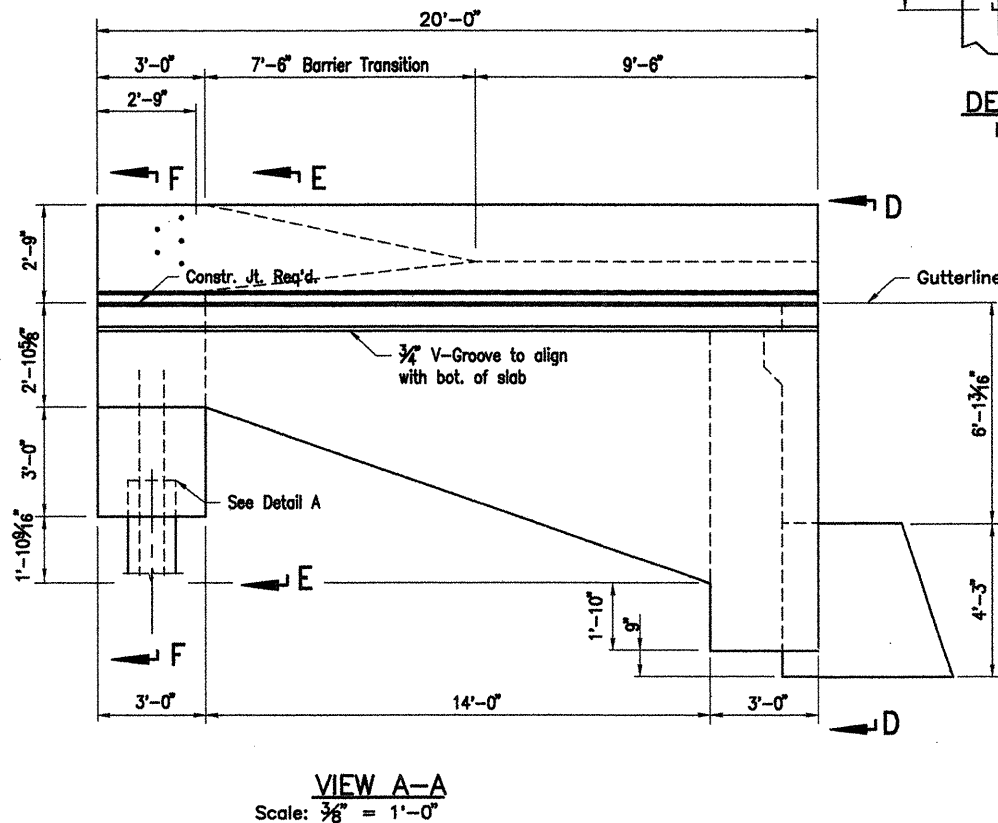
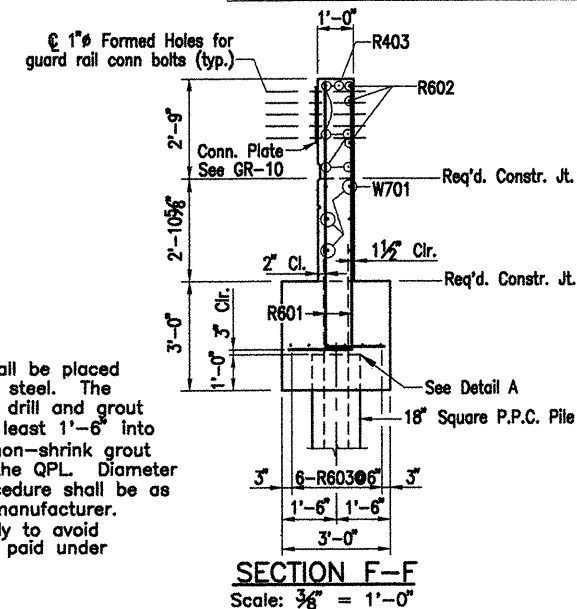
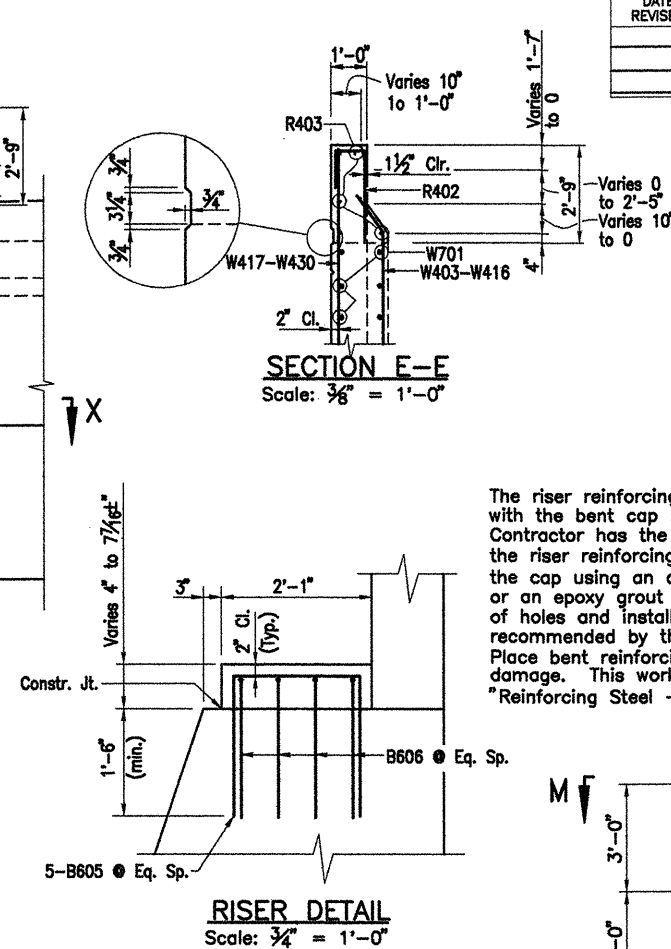
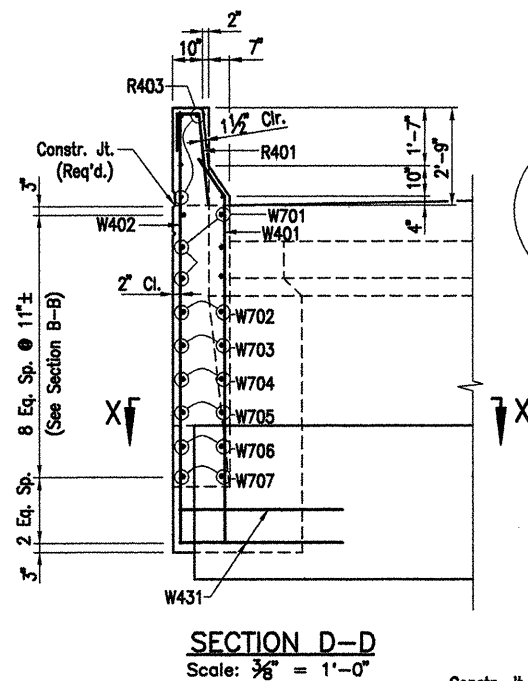
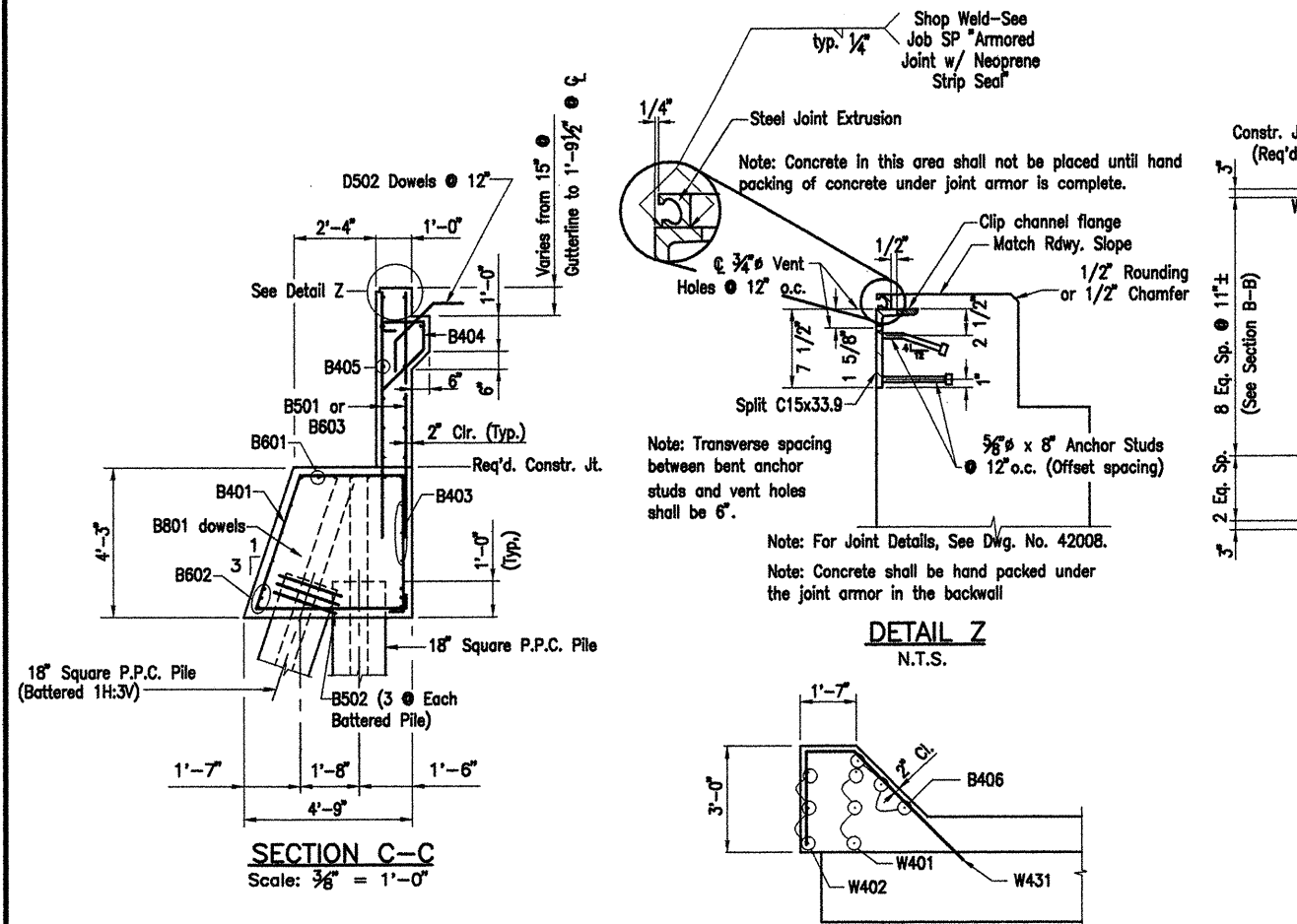


DATE REVISED	DATE FILMED	DATE REVISED	DATE FILMED	FED. ROAD NO.	STATE	FED. AID PROJ. NO.	SHEET NO.	TOTAL SHEETS
					ARK.			
				JOB NO.	110394	63	196	
				06830	END BENT 97	41975		



DETAIL A
N.T.S.

SECTION M-M
N.T.S.

Drill and grout B801 dowels 3'-0" into piles using an approved non-shrink grout or an epoxy grout listed on the QPL. Diameter of holes and installation procedure shall be as recommended by the grout manufacturer.

For Location of Sections A-A, B-B and C-C, see Dwg. No. 41974.

ALTERNATE NO. 1
DETAIL OF BENTS - WHITE RIVER
ABUTMENTS - END BENT 97
(SHEET 2 OF 2)

WHITE RIVER STR. & APPRS
(CLARENDON) (PH. II) (F)
MONROE COUNTY

ROUTE 79 SEC. 13

ARKANSAS STATE HIGHWAY COMMISSION

LITTLE ROCK, ARK.

Engstrom/Modjeski and Masters, Inc.

DRAWN BY: FS DATE: Nov. 07 FILENAME: b1103941_a2
CHECKED BY: YO DATE: Nov. 01 SCALE: $\frac{3}{8}'' = 1'-0''$
DESIGNED BY: FS DATE: Nov. 01

BRIDGE NO. 06830 DRAWING NO. 41975

COMPANY\1999 JOBS\99-044 AHTD\WHITERIVER\JOB 110394\2endbent97alt1